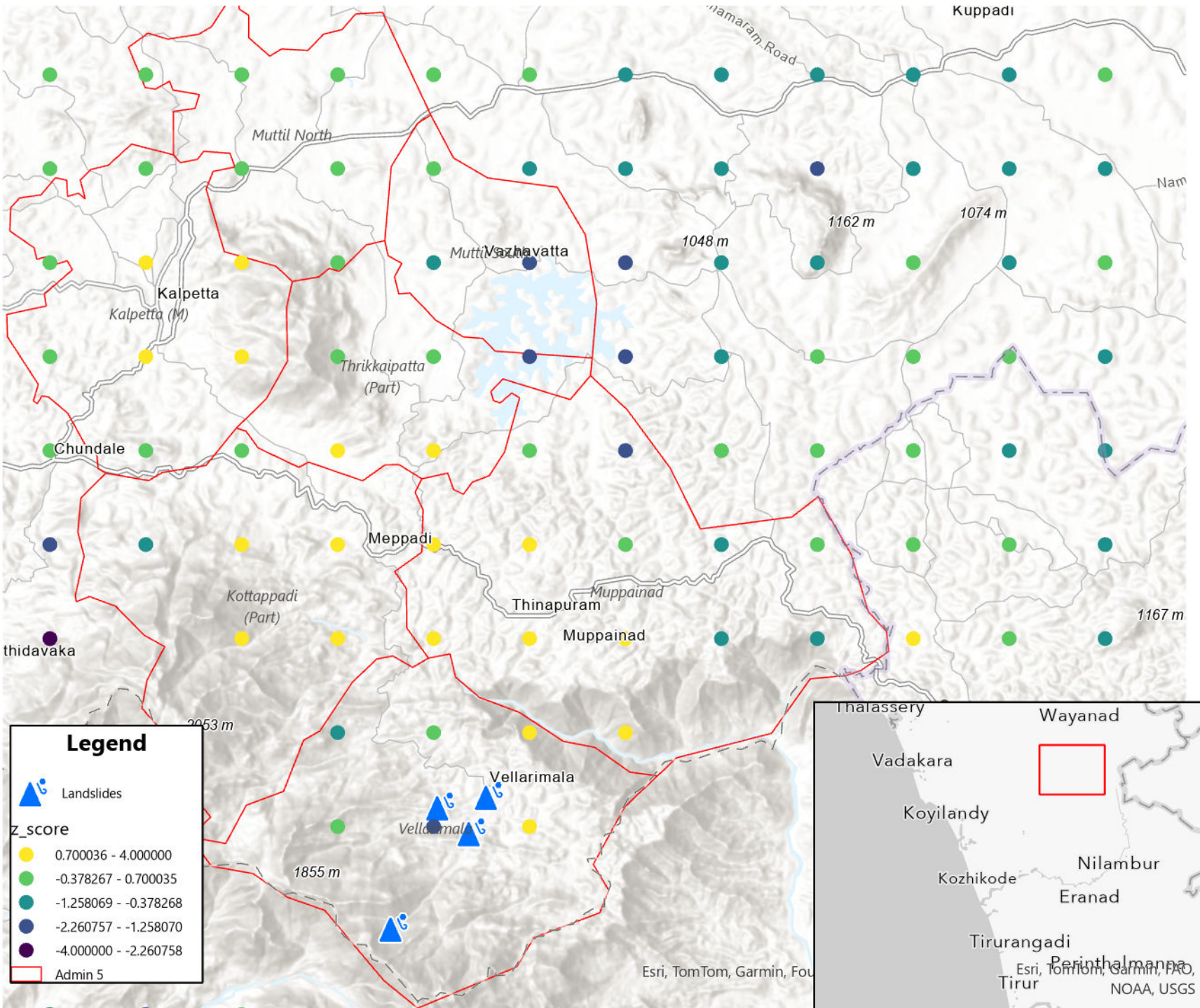


Landslides in Kerala

Population Density Change Relative to 90-Day Pre-Event Baseline | Map represents population as of 8pm local time on August 3rd.
 July 30 to August 3rd, 2024

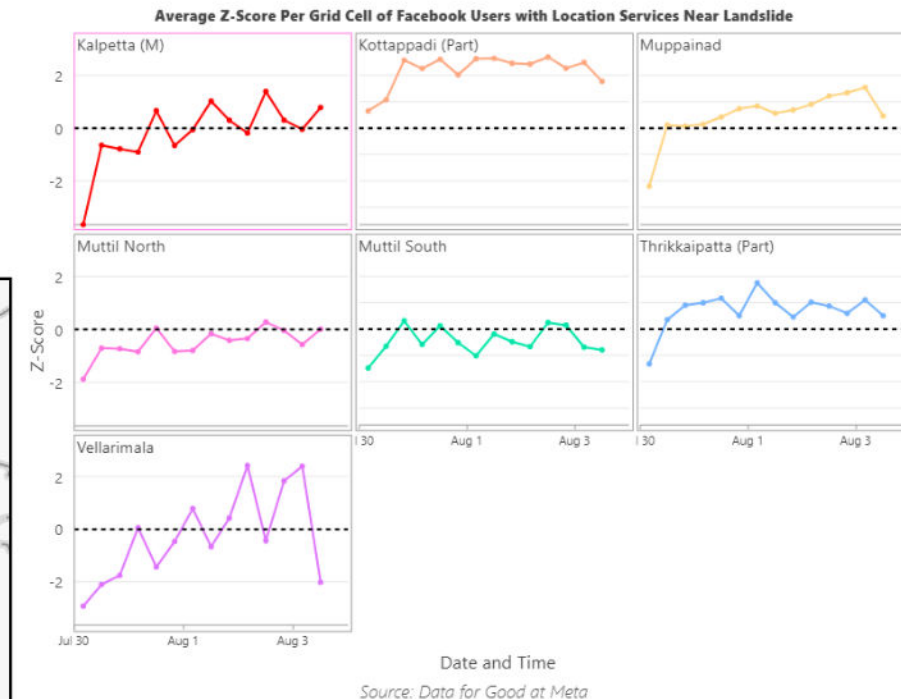


Following devastating landslides overnight on July 30th due to heavy rainfall in the Wayanad district of Kerala, India at least 358 people have been killed and more than 200 are still reported missing. Thousands have been displaced to nearby areas.

Based on data from Data for Good at Meta, as of the evening of August 3rd the population of the Vellarimala area which was principally affected by the landslides remains significantly below the pre-event 90 day baseline, but daytime population in this area has increased to over 2 standard deviations above baseline, which on average represents a 40% increase. This is most likely due to the presence of the relief effort.

Kottappadi, Kalpetta, Thrikkaipatta, and Muppainad remain significantly above baseline by a range of 1 to 2 standard deviations relative to baseline, representing a range of 5% to 40%.

The areas of Muttil North and South are slightly below baseline but represent areas of minimal change in population.



Source: Data for Good at Meta